

An aerial photograph of a mountain valley. In the foreground, a dirt road runs diagonally from the bottom left towards the center. The valley floor is a mix of green fields and brownish, scrubby terrain. In the background, there are rolling mountains under a cloudy sky.

**PARTNERS IN CONSERVATION  
GREATER SAGE GROUSE  
DEMONSTRATION PROJECT**

**JUARISTI RANCH  
WHITE PINE COUNTY, NEVADA**



**BARRICK**

**NORTH AMERICA**

**ne** noble  
energy

# PARTNERSHIP - BACKGROUND

- Barrick operates five gold mining operations and six ranches in northern Nevada, comprising 200,000 acres of private land
- Barrick and its predecessor companies have had a presence in the area for more than 50 years
- Barrick has a long history of support for significant habitat restoration and conservation projects in the Ruby Mountains and throughout the region, often in coordination with state and federal regulators
- Noble Energy is a leading independent exploration and production company
- Our core operations areas are the DJ Basin of Colorado, Marcellus Shale of Pennsylvania and West Virginia, deepwater Gulf of Mexico, West Africa and Eastern Mediterranean
- We are in the early stages of exploration in Northeastern Nevada, where we have access to 372,000 acres in Elko County, generally located north and south of Interstate 80 between Wells and Elko
- Noble Energy's Huntington exploration project is located ~30 miles north of this demonstration project



**BARRICK**

**NORTH AMERICA**

Greater Sage  
Grouse  
Demonstration  
Project



# OUR SHARED CHALLENGE

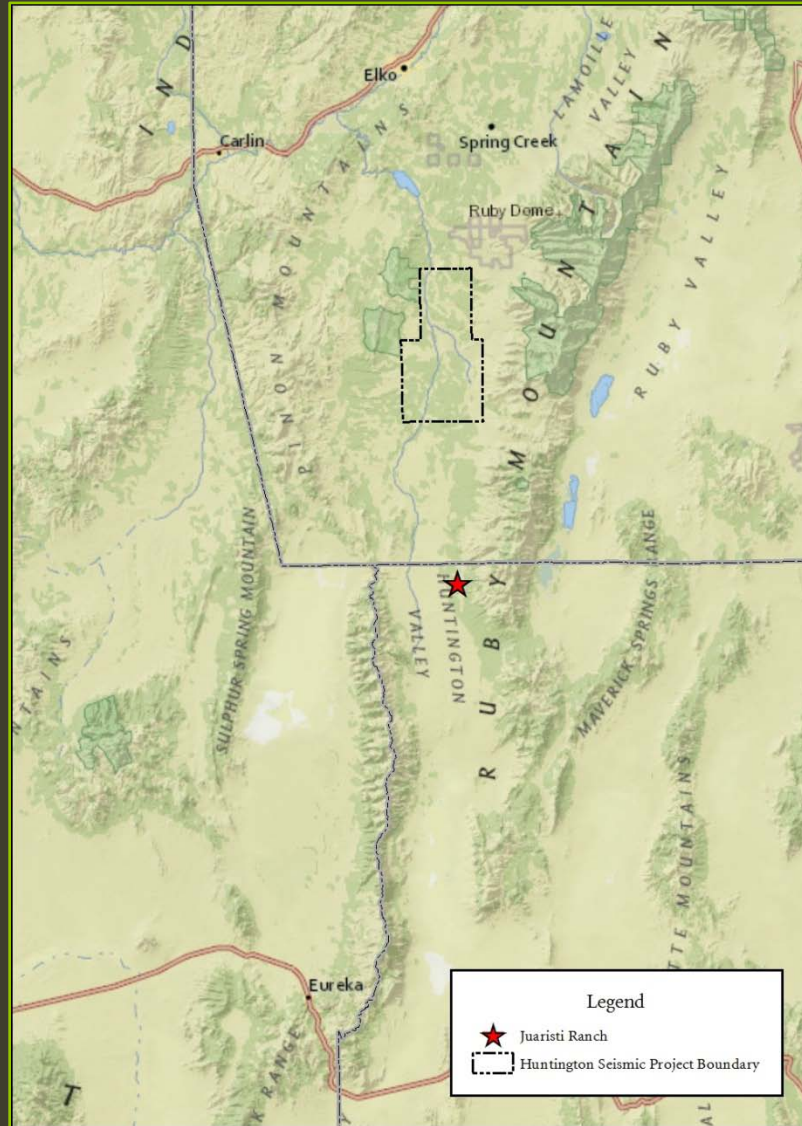
- The U.S. Fish and Wildlife Service is evaluating the possible listing of the Greater Sage Grouse as an endangered species
- The basin and range of northeastern Nevada are home to productive Sage Grouse habitat
- Listing decision is due September 2015 and could significantly impact resource and agricultural industries in the West



Greater Sage  
Grouse  
Demonstration  
Project

# OUR OPPORTUNITY

- Barrick's Juaristi Ranch is home to a variety of transitional high desert and established Piñon-Juniper forest habitats in northwestern White Pine County
- The 600-acre ranch is south of Noble's Huntington Project area of interest and is bordered by private and public lands managed by the BLM and USFS



Greater Sage  
Grouse  
Demonstration  
Project

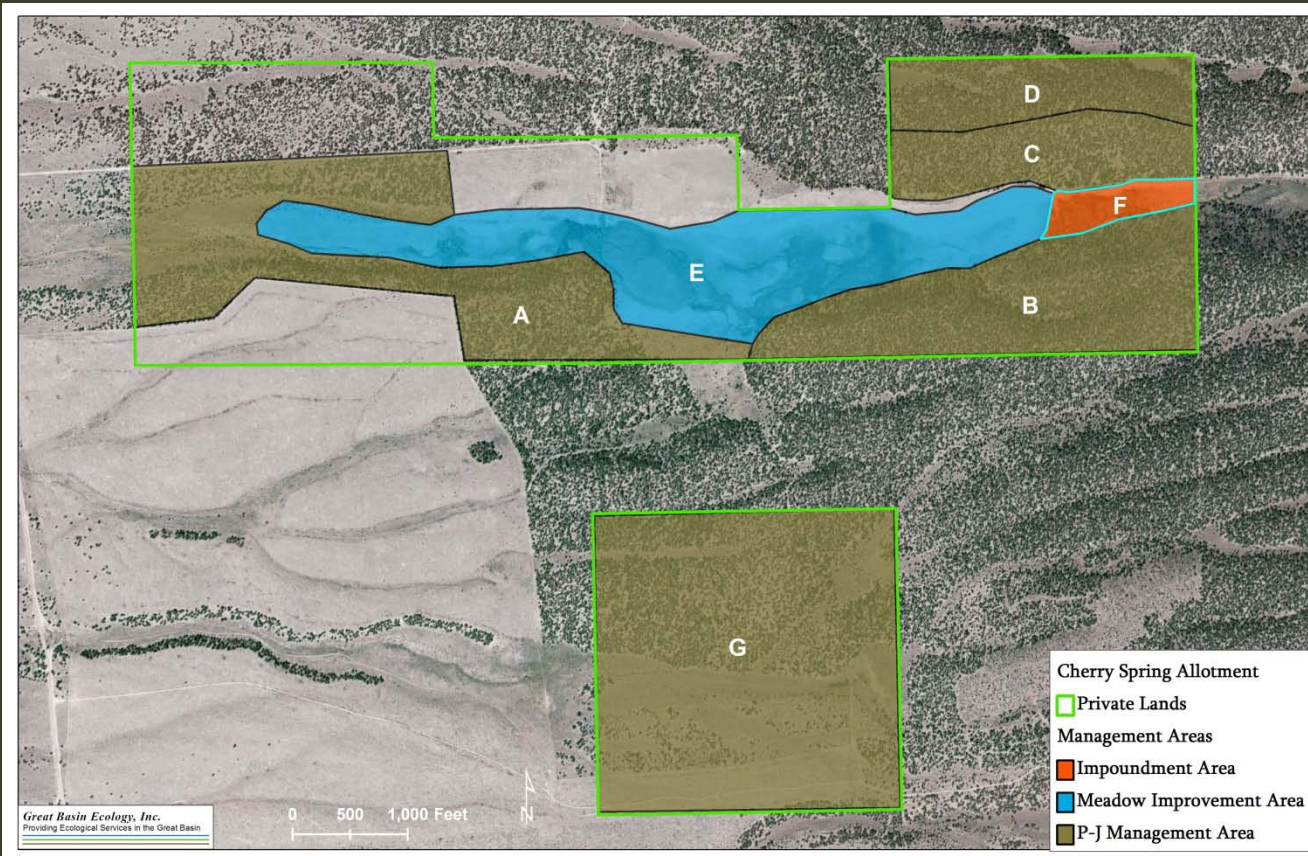
# OUR OPPORTUNITY

- We have a shared interest in demonstrating:
  - Sage Grouse habitat restoration and conservation are preferred alternatives to added regulation and exclusion from the lands that support our economy
  - A variety of ecologic, science-based techniques can effectively improve and rehabilitate Sage Grouse habitat
  - Responsibly managed livestock can play an important role in the maintenance and improvement of Sage Grouse habitat
  - Successful mitigation projects can lead to establishment of a “mitigation bank” to offset land disturbance associated with resource development
  - A multi-phased conservation approach that benefits the lifecycle of Sage Grouse seasonal habitat use
  - Partnership between an oil and natural gas company and a mining company
    - Barrick is providing private land, in-kind funding and out-of-pocket expenses
    - Noble Energy is providing out-of-pocket expenses and scientific expertise
  - Enhancement of best available science in partnership with interested parties, including federal and state agencies

Greater Sage  
Grouse  
Demonstration  
Project

# PROJECT DETAILS

- The project focus area is a 94-acre wet meadow on Barrick's Juaristi Ranch, west flank of the Ruby Mountains



Greater Sage  
Grouse  
Demonstration  
Project

# PROJECT DETAILS

- Native sagebrush habitat surrounding meadow area has been largely overtaken by Piñon and Juniper encroachment, but remains in small patches on south side of meadow
- The drainage upslope from the meadow is overgrown with willows and P-J, limiting water production to the meadow



Greater Sage  
Grouse  
Demonstration  
Project

# PROJECT DETAILS

- Phase I – 2014 (Private lands)
  - Focus is late-brood habitat enhancement
  - August – Piñon-Juniper removal from all sides of meadow project area
  - Ongoing weed management
  - Fence repairs and maintenance
  - Fall – Sagebrush seeding and transplanting
  - Continuous monitoring and data collection



Greater Sage  
Grouse  
Demonstration  
Project



# PROJECT DETAILS

- Phase II – 2015
  - Expanding focus beyond late brood into other sage grouse lifecycle habitat uses
  - Apply learnings from Phase I to larger scale landscape
  - Summer – Willow removal
  - Fall – continued seeding and transplanting
  - Hydraulic/drainage improvements (TBD)
  - Ongoing weed management
  - Continuous monitoring and data collection
  - *Video next slide*



Greater Sage  
Grouse  
Demonstration  
Project

# PROJECT AREA VIDEO JULY 2014

Greater Sage  
Grouse  
Demonstration  
Project

# CONCLUSION



- We all want the same things
  - Improved habitat for Great Basin wildlife, including the Greater Sage Grouse
  - Reduced wildfire risk/loss of habitat
  - Responsible resource development, economic opportunities, recreation, public access and job creation
  - Advancing best available science for habitat improvement solutions

Questions?

Greater Sage  
Grouse  
Demonstration  
Project